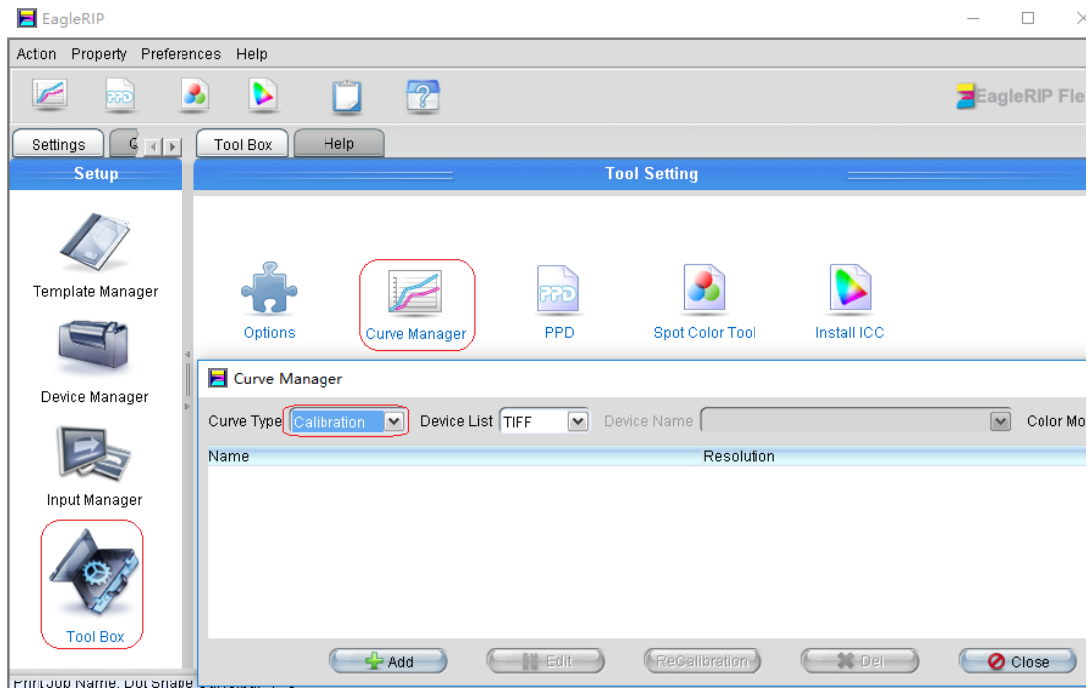


How to edit curves in EagleRIP Flexo

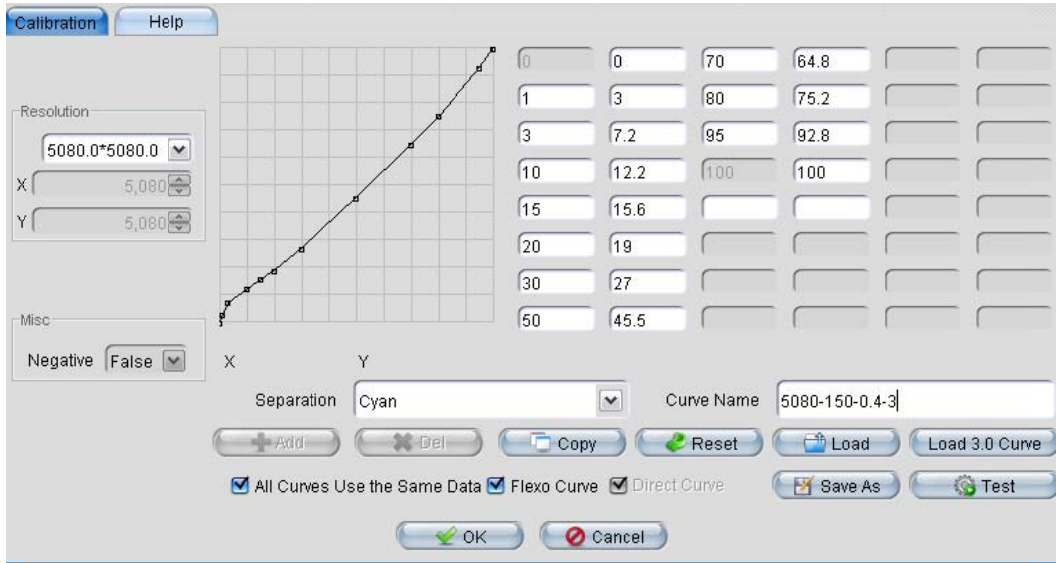
Calibration curve on plate

For letterpress or flexo printing, after washing plate, suppose the smallest dot on plate is 0.4%, the smallest dot on job file is 3%, so now we need to make a curve as following:

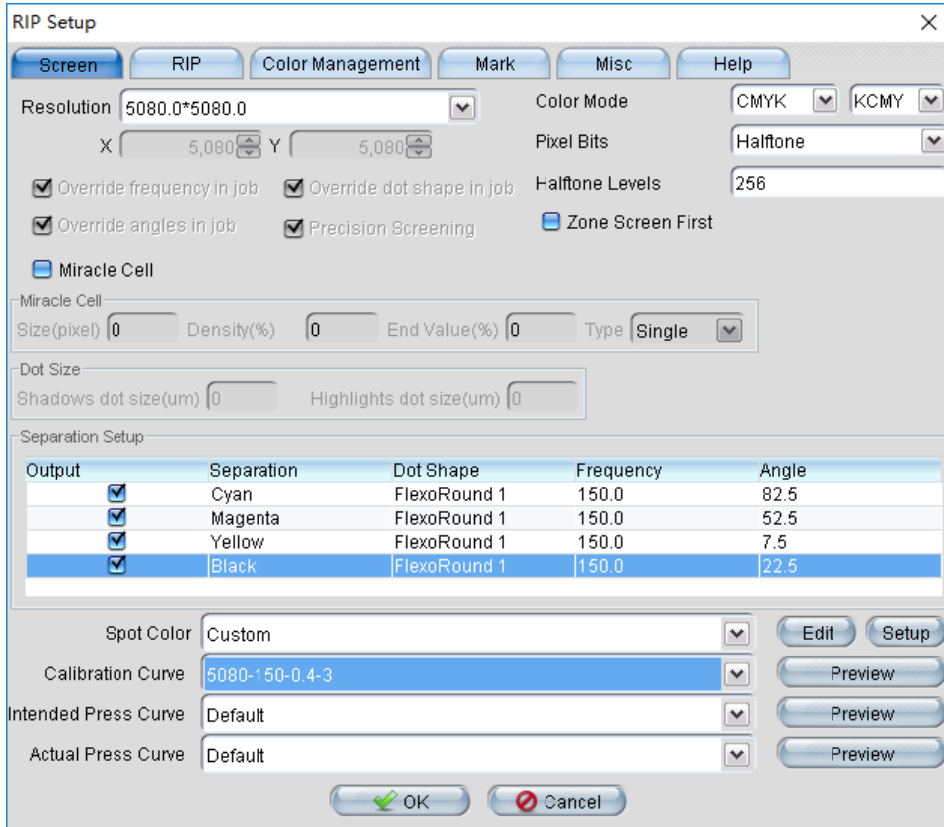
1. Click Tool Box from Settings, double click Curve Manager;
2. Select Calibration from Curve Type options:



3. Click Add button to create a new curve, input the curve name and select the resolution; check the boxes of All Curves Use the Same Data and Flexo Curve; input 0.4 on left blank area, and 3 after it, press Enter to save the group of data. Then click OK to exit the setting.
4. You also can specify other control point to calibrate the plate.

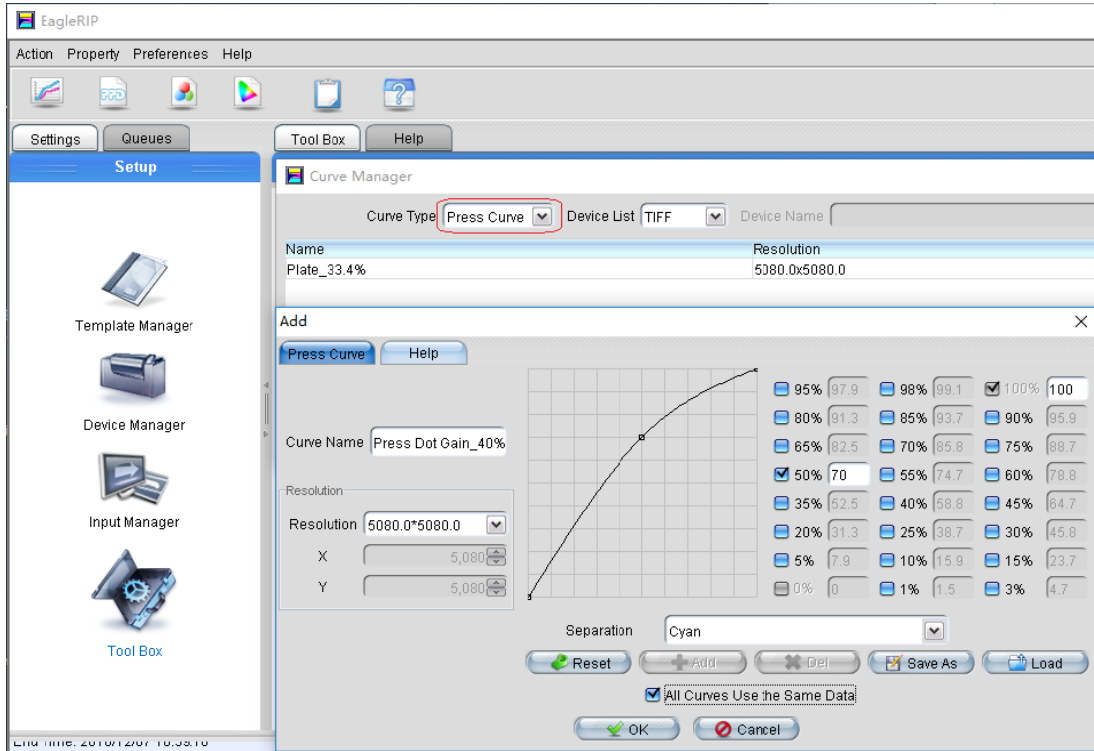


5. And then use this curve while processing jobs by selecting it from Calibration Curve options, as following:

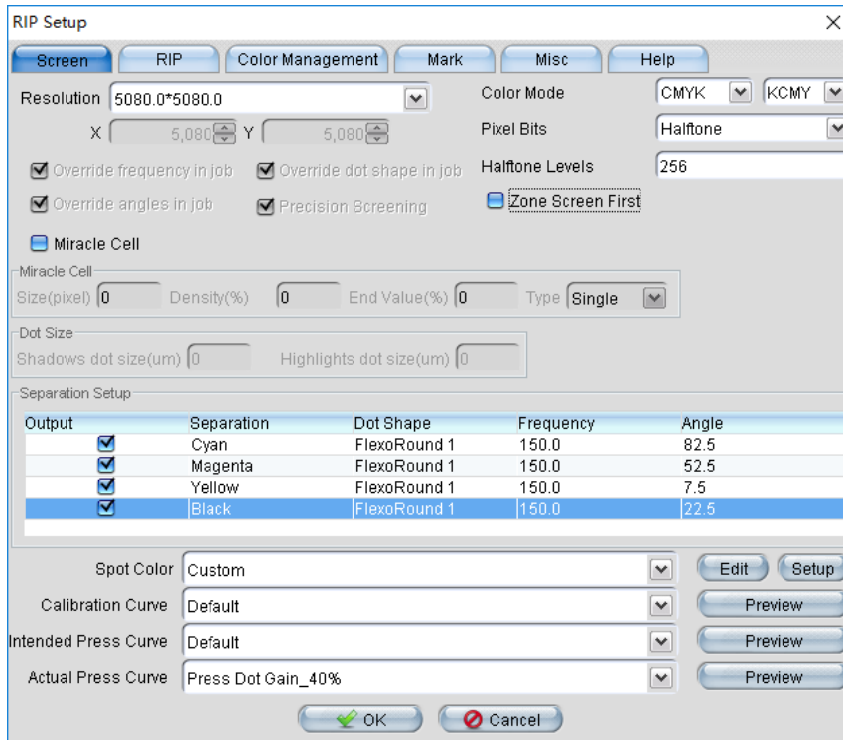


Actual Press Curve for dot gain on press machine

For dot gain while printing on press machine, if dot 50% on plate and its result on printing material is 70% after printing, so input 70 on the blank area after 50%, as following:



And then select this dot gain curve from Actual Press Curve options:



the end